

# CINEVISION™ PSE

PARALLEL STREAM ENCODER



Sonic CineVision™ PSE is an enterprise-level VC-1 encoder designed to deliver stunning video quality for next-generation Blu-ray Disc titles. Used to deliver best-of-class VC-1 encodes for a majority of Hollywood's HD title catalog and built on Microsoft® technology, CineVision PSE features powerful server-based encoding technology, stunning cinematic-quality encoding, extensive VC-1 parameter control, stream legalization, and segment-based re-encoding.

## THE PROFESSIONAL STANDARD FOR CINEMATIC VC-1 ENCODING

Competing in today's professional media services market means keeping up with an ever-expanding array of video distribution options, each with their own format-specific requirements. That takes an encoding solution that delivers powerful control and maximum workflow flexibility. With the arrival of the Blu-ray Disc high definition format that combines stunning visuals with expanded capacity and advanced interactivity – it's more important than ever that your encoding systems support the latest capabilities and ready your business for new opportunities. For stunning VC-1 delivery, there's only one encoder that meets that test: Sonic CineVision PSE.

Sonic's CineVision Parallel Stream Encoder is a mastering-level encoding system specifically designed to meet the stringent image-quality demands of major motion picture studios and high-end authoring facilities. Built on technology from Microsoft® – the inventor of the VC-1 codec - CineVision PSE has a proven track record for delivering the stunning VC-1 encoding quality that Hollywood studios demand.

CineVision PSE is a fully scalable encoding solution designed to integrate into and leverage existing processing infrastructures. Whether you're looking to harness the power of multiple blade-style servers, or work on a stand-alone PC, CineVision PSE can be configured to integrate into your existing workflow and deliver best-of-class VC-1 encoding for your Blu-ray Disc titles. Featuring comprehensive parameter legalization, guaranteed stream compliancy, advanced segment-based re-encoding and parameter control, and exclusive post-encode analysis tools, CineVision PSE delivers a unique combination of control and power your production business can't afford to be without.

LEARN MORE, BOOK A DEMONSTRATION, AND FIND YOUR NEAREST RESELLER AT:

[WWW.SONIC.COM/GO/CINEVISIONPSE](http://WWW.SONIC.COM/GO/CINEVISIONPSE)



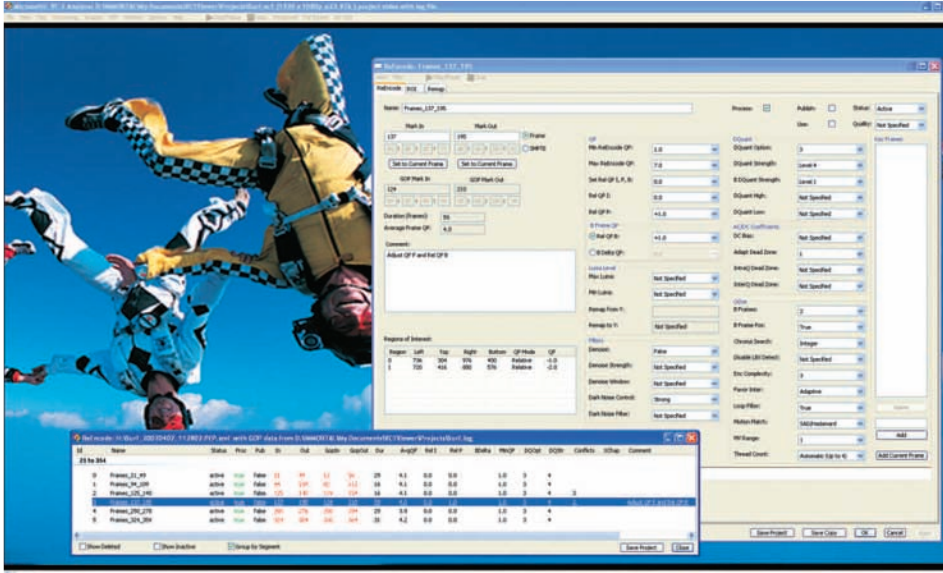
## KEY FEATURES

### Comprehensive Blu-ray Disc Support

CineVision PSE comes with dedicated templates for Blu-ray Disc enabling you to quickly deliver stunning and 100% compatible VC-1 video encodes.

### Built on Microsoft® technology

CineVision PSE is built on industry standard VC-1 encoding from Microsoft – the inventors of the VC-1 codec.



**Unique Encoding Power** - CineVision PSE's segment management tools offer unrivalled access to the full range of VC-1 encoding parameters enabling the efficient creation of stunning VC-1 encodes.

### The Choice of Hollywood

CineVision PSE encoding technology has been used to deliver the vast majority of next-generation HD titles to market making it the choice of Hollywood studios and production houses.

### Enterprise-level VC-1 Encoding

CineVision PSE has been optimized to utilize the powerful server-based processing infrastructures available in high-end compression houses.

### Quality-focused Parallel Processing

CineVision PSE takes advantage of large processing infrastructures (e.g. Blade servers) to analyze, process, and encode stunning VC-1 video for release on Blu-ray Disc.



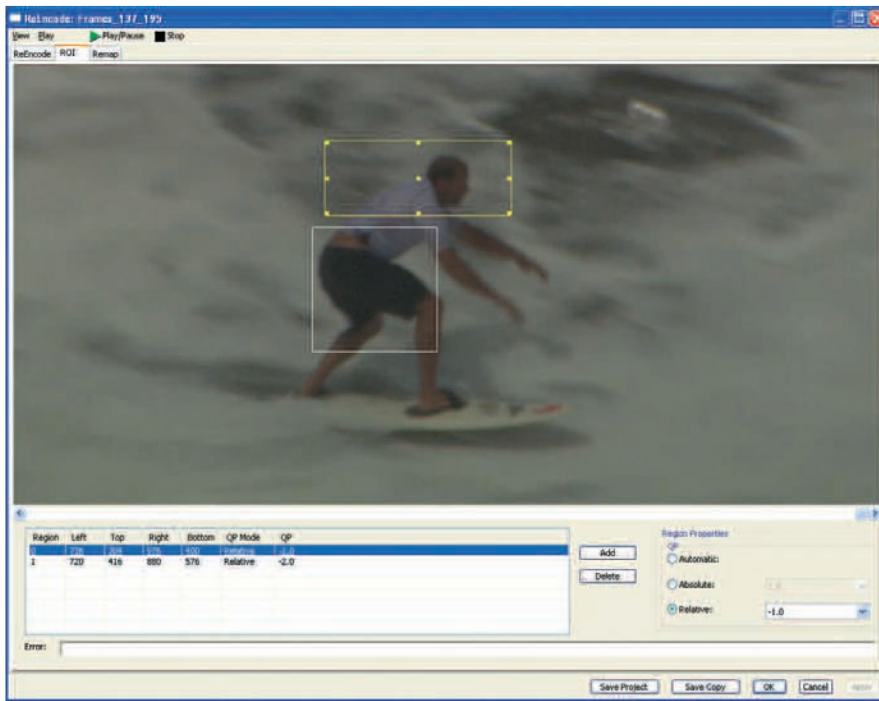


### Ultimate parameter control

CineVision PSE provides compressionists with the ultimate encoding toolset with access to more VC-1 encoding parameters than any other encoder.

### Flexible and scalable configurations

CineVision PSE can be optimized to deliver stunning VC-1 in a variety of configurations - from single workstation to multiple blade servers - allowing you to utilize your business's existing infrastructure and deliver stunning VC-1 video encodes.



**Define your Region of Interest** - Unrivalled Re-encoding Tools - CineVision PSE features a unique industry-leading 'region of interest' definition tool that allows you to focus in on any area of your encode within a segment - all the way down to a single macroblock within a single frame.

### Segment re-encoding

With extensive VC-1 parameter control and 'region of interest' definition down to specific areas of frames, no other encoder delivers the same level of optimization control for segment re-encoding.

### Advanced analysis and pre-processing tools

CineVision PSE includes an extensive suite of utilities for creating high quality 4:2:0 8-bit raw video files, inverse telecine processing, and a variety of elementary stream analysis tools.

### Proven Sonic Quality

Reliability and usability have made Sonic's production systems the clear choice of high-end production facilities around the globe, used to create the vast majority of the world's commercially-released DVDs. CineVision PSE represents Sonic's continued technological innovation and commitment to providing professional facilities with the ultimate Blu-ray Disc production workflow.





## SPECIFICATIONS

### Video Codec Support

- VC-1 Advanced Profile, Levels 2 and 3

### Encoding Modes

- Two-pass variable bit rate (VBR)
- One- and two-pass constant bit rate (CBR)

### Pre-processing Tools

- High-quality dither and rounding 10- to 8-bit sample conversion
- High-quality dither and rounding 4:2:2 to 4:2:0 chroma conversion
- Inverse Telecine

### Filtering Controls

- Denoise with strength and window size control
- Dark noise control

### Video Preview and Analysis Tools

- Software de-interlacing
- Video zoom in/out
- Superimpose time code
- SMPTE color bars display
- Macroblock grid display
- Frame/field display toggle
- Side-by-Side video comparison
- Split screen video comparison
- Macroblock bit usage display
- Macroblock motion vector display
- Macroblock type display
- Macroblock quantization level display
- Pixel value display
- Waveform display
- Playback quality monitoring
- HD-SDI playback (requires AJA Xena LH, not included)

### Segment-based Editing and Re-encoding

- Segment management list
- Edit in-point, out-point and segment duration fields
- Definable region of interest for specific picture area re-encoding
- Mark new I-frames during segment re-encoding
- DQuant adjustment
- Adjustable relative QP level for I, P and B frames
- Dead Zone control
- Adjustable denoise and dark noise control filtering
- Luma level remapping
- Luma range control

### Movie Timeline

- Bit rate display track
- Buffer level display
- Frame type display

### Video Resolution Support

- 1920 x 1080
- 1440 x 1080
- 1280 x 1080
- 1280 x 720
- 960 x 1080
- 720 x 576
- 720 x 480
- 704 x 576
- 704 x 480
- 544 x 576
- 544 x 480
- 480 x 576
- 480 x 480
- 352 x 576
- 352 x 480
- 352 x 288
- 352 x 240

### Frame Rate Support

- 59.94, 50, 29.97, 25, 24, 23.98, 3:2 pull-down insertion

### Supported Input Formats

- Planar YUV files (.yuv)
- Raw YUV files (.raw)
- AVI files (I420, UYVY, YUY2 and V210)
- QuickTime files in 2Vuy or 2vuy (Windows UYVY), yuvs (Windows YUY2), and V210 formats

### Encoding Utilities and Tools

- Blu-ray Disc project templates
- Elementary stream analysis tool
- Elementary stream compliance checking tool
- Elementary stream editing tool
- Elementary stream inverse telecine processor
- Automatic legalization on finalizing of stream
- Batch encoding – queue multiple encoding sessions in a batch
- Project templates

### Operating System and Configuration Support

- Windows® XP Professional Service Pack 2
- Windows Server 2003 SP1 or R2 (32-bit)
- Scalable Blade Servers configuration
- Controller/Worker quality focused distributed processing

## CONTACT INFO

### SONIC USA

101 Rowland Way. Novato. CA 94945. USA.  
Ph: 415.893.8000. FAX: 415.893.7834

### SONIC BURBANK

3500 West Olive Avenue. Suite 730. Burbank. CA 91505. USA.  
Ph: 818.823.4000

### SONIC EUROPE

22 Warwick Street. London. W1B 5NF. England.  
Ph: +44 20 7437 1100.

### SONIC PAC RIM

5F 2-6-30 Kaigan. Minato-Ku, Tokyo 105. Japan.  
Ph: +81 3 5439 7171.